

#LIVEWARM

Wuxly Movement is a progressive brand of Canadian made outerwear. Born from a love of wildlife, Wuxly is proud to bring forward a new generation of high performance outerwear. Wuxly utilizes military grade technical fabrics to promote movement in any condition, while adhering to our animal-free commitment.

The brand mantra, 'live warm' is more than a product benefit – it's a way of life that promotes warm vibes through positive actions. Independently owned, Wuxly lives warm through a unique production process that saves the lives of thousands of animals, utilizes innovative sustainable fabrics and implements the most stringent fair labour practices. From start to finish, each decision and detail we put into the creation of our products.

In the end, our goal is deliver an experience that allows to live warm— both inside and out.



THE DETAILS



Made In Canada



Super Warm (Even When Wet)



For People & Planet



Animal Friendly

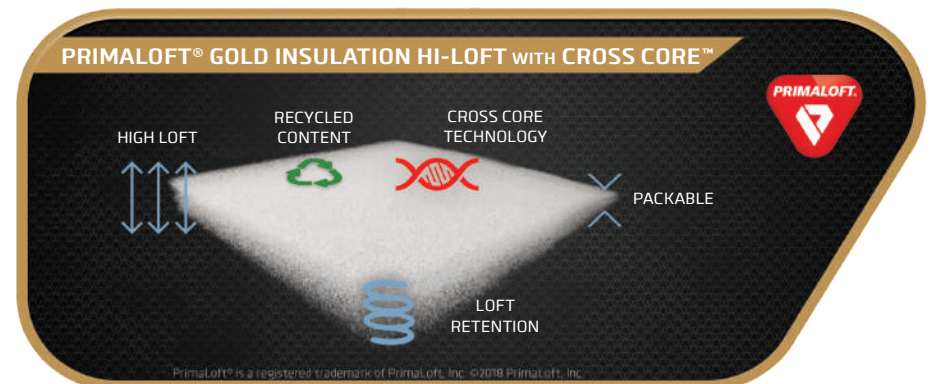


Full Warranty

INSULATED WITH PRIMALOFT GOLD:

Our Canadian-made parkas are insulated with the best goose-down alternative on the market. The insulation that we use is called PrimaLoft® Gold and it provides the ultimate warmth-to-weight ratio with breathability. In a Wuxly Parka, you will feel your warmest without the extra bulk like goose down. PrimaLoft® Gold even outperforms down insulation when wet because it is water-resistant so you stay warmer and drier.

Beyond the warmth, PrimaLoft® Gold is made from 55% post consumer recycled content. Our parkas are animal friendly, cruelty free, vegan, call it what you want, but animals are peacefully left out of Wuxly Movement. Great! Now your conscience and your body both feel warm all winter long!



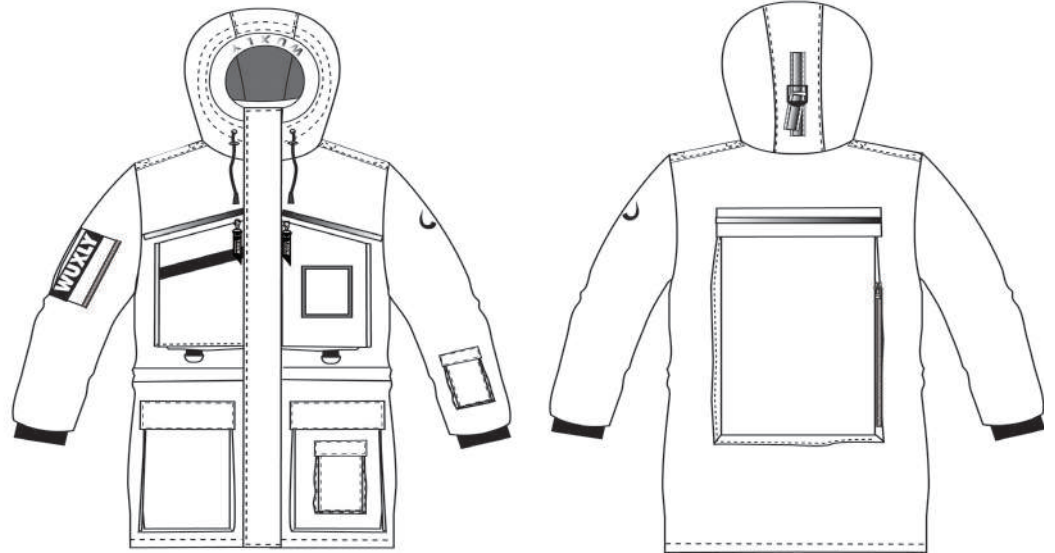
THE SABERTOOTH PARKA



THE SABERTOOTH PARKA

FEATURES:

- 400g Primaloft Gold Insulation
- Weather tested, waterproof & breathable Vegan tech shell
- Inner snap closure snow belt
- Heavy duty two-way YKK Zipper
- Adjustable Wire Moldable hood
- 9 Front Pockets
- 2 Side Arm Pockets
- 1 Large Back Pocket
- Special minky lined Inner Media Pocket
- Heat Reflective lining for maximum heat retention
- Reflective detail on front chest area, back pocket, back and top of hood.



UNISEX SIZES:

XS, S, M, L, XL

SUGGESTED TEMPERATURE:

+0C TO -45C (32F TO -49F)



POLAR WHITE



EMPEROR YELLOW



MOONLIT BLACK



THE 'X' FACTOR

For the adventurous folks.







WUXLY
MOVEMENT

WUXLY